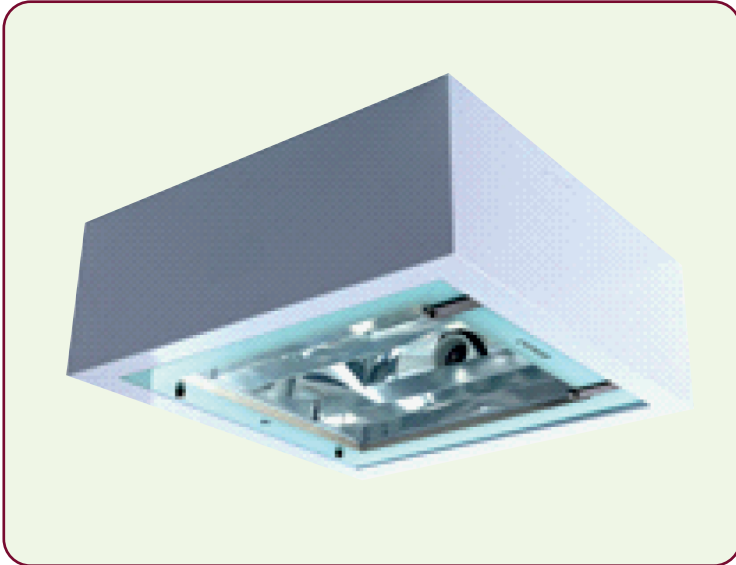


MAXI CANNOPY SERIES

Gas station and toll gate light fitting



Model.: LT-YGWH114A

Description
Features:

Rating:IP65

Housing:Corrosion-proof die-casting aluminum housing and doorframe, shock-resistant and long-term durability.

Lens: UV-resistant polycarbonate diffuser,precisely designed with prismatic structure for uniform light distribution and free from glare. FYGW142-I/II have the lens fixed to the housing with stainless steel screws while FYGW142-III with clips.

Reflector:Anodized high-pure aluminum hydroformed reflector in FYGW142-I, whitepainted superior flat plate reflector in FYGW142-II/III,precisely designed with accurate light distribution and high light.

Application: Gas station, basement, indoor parking lot area.

Installation

Removable G1/2" cable gland in the back of the housing of FYGW142-I/II for cable entry from the wall inside,or lateral cable entry accessible with joint pipes after wall mounting.The cable entry of FYGW142-III in the bottom of the housing is surrounded with one piece silicon gasket for enhancing the performance of protection from contaminants.Three expansion bolts used for fixing the luminaires.

Model	Dimension	Power	Capacitor	Light source	Lamp Type
	LxWxH(mm)				
LT-YGWH114A	520 x 520 x 220	250W	18 μ F	SON-DE / MHT-DE	E40
LT-YGWH114A	520 x 520 x 220	400W	25 μ F	SON-DE / MHT-DE	E40